

STC-TDM40x overview

As a cost effective solution for the traditional telecom services migrate to the IP packet networking technology, the STC-TDM20x adopts the innovative TDM over IP technology, it transports the legacy E1 data through existing IP networks.

STC-TDM40x is the second generation of the TDM over IP equipment with IP circuit emulation that supports transportation of two E1 and two local Ethernet ports over the IP networks. The uplink port and user data ports are IEEE 802.3 compliant, 10/100BaseT auto-sensed Ethernet ports.

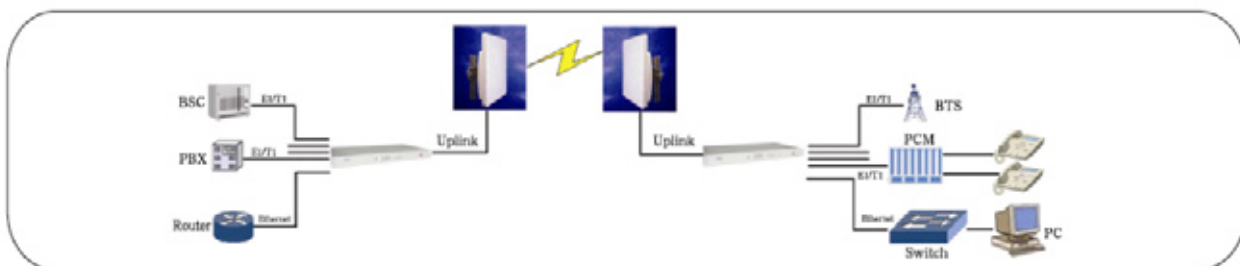
The state-of-the-art design provides the highest availability with the accurate timing signal and data bit stream reconstruction. Predefined system parameter profiles that according to different application requirements ultimately simplify the installation process and saving the maintenance cost.

Telecom and Enterprise users can save a lot of access and equipment costs and generates new revenue by offering different types of services over existing Ethernet networks. It is also suitable for connecting to the wireless equipment to achieve fast deployment of E1 services. One particular application is to build E1 links with low cost Wireless LAN bridges, replacing much more costly microwave radios. Carriers can use STC-TDM40x to provide legacy TDM services over wired or wireless packet network.



Functionality

1. 4x E1/T1 ports supported, E1 or T1 easily selected using web management
2. Point to point and point to multi point supported
3. User friendly web server supported for easy setup and maintainance
4. Uplink ports 1+1 backup supported
5. Stable E1 Clock recovery, low jitter and wander
6. Low processing delay for E1/T1 channels, high bandwidth usage efficiency
7. Resist to packet loss, with PCM frame synchronisation protection
8. User definable packet encapsulation packet size for different applications
9. Enough jitter buffer to resist packet delay variation (PDV)
10. Local Ethernet port throughput limiting, assuring E1/T1 QoS
11. Local and remote E1 LOS and AIS and packet loss indication for trouble shooring and maintainance
12. Support cascade concatenate for more then 4 E1 ports

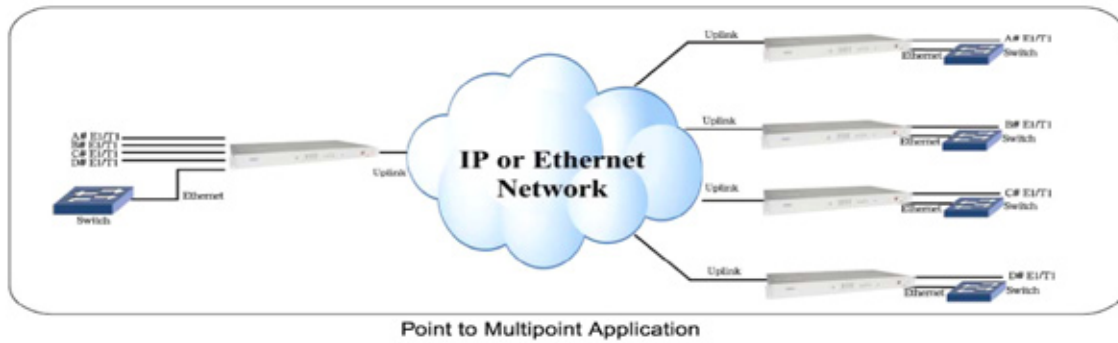


Point to Point Application

Specification

Model	STC-TDM400	2x WAN uplink, 4x E1, 2x LAN
Interfaces	E1-ports	4x E1/T1 supported Comply with G.703 Impedance: E1 120Ω/T1 100Ω or 75Ω
	Data ports	2x LAN supported Comply with IEEE 802.3 10/100Mbit auto-sense Full/Half Duplex auto-sense Web management supported
Power Supply	AC	220V (165~265V)
	DC	+24V (+18V~+36V) (Dual power supply supported)
	Consumption	< 10W
Work environment	Temperature	0~50°C
	Relative Humidity	< 90% (non-condensing)
Dimension	WxHxD (mm)	440x44x230

TDM over IP	WAN	E1	LAN ports	Management	Alarm traps	QoS	VLAN
STC-TDM200	1	2	-	console	-	Yes	Yes
STC-TDM201	1	2	2	Web/console	-	Yes	Yes
STC-TDM400	2	4	2	Web/console	-	Yes	Yes
STC-TDM800	2	8	2	SNMP/Web	Yes	Yes	Yes



Reseller information

Sweden Telecom AB 
Main office

Phone +46 (0) 18-610 00 60
Fax +46 (0) 18-610 00 61
sales@swedentelecom.com